

COULD IT BE THE MARY STEWART SHIP - ONCE AGAIN???

Is it possible that once again, the Mary Stewart has given up more artifacts for the Pentwater Historical Society Museum? The evidence leads one to suspect that. On Monday morning July 23, 2012, two Charles Mears State Park campers found a portion of an old ship's beam complete with about 14 spike nails, on the shoreline of Lake Michigan! Brian and Barbara Stoffer

of Grandville, Michigan were enjoying the morning by wading in the waves and surf near the northern end of the Charles Mears State Park. Brian happened to step on what he thought was a piece of driftwood in about 3 feet of water, and decided to see if he could get it out of the lake bottom sand. After much tugging and foot digging, he managed to pull free an approximately 7 foot "formed" beam which looked like nothing he had ever found or retrieved before in a lake.

With much presence of mind, the couple wisely informed park hostess Nancy Snyder and was given my name as a person from the Pentwater Historical Society to contact and determine if the find was of value and interest to our organization. Thanks to the State Park staff the artifact was moved with park equipment to the park's entrance building for safe keeping and collection by our society. Earlier this year, PHS members Dan Filius and Ray Kloostra found and retrieved a similar but larger beam



Ed takes a look at a piece of old shipwreck found by Brian Stoffer.

on the Lake Michigan shoreline that was also located very close to this most recent finding. It's extraordinary that these beams, after 146 years lying in Lake Michigan and buried in the sandy bottom, should reappear. These formed beams are similar replicas of the Mary Stewart ship remains that were found in the Pentwater channel

during construction of our new piers in 1999 and 2000. In late September of this year, Dan Filius during one of his early morning beach walks found another ship's beam on the shoreline. This beam was washed ashore just about even with the sand dunes of the beach area. Yup, this beam is also now part of our Ships and Ship-ping museum artifact collection!

You may recall that our feature article in the Spring Newsletter was "The Propeller Ship Mary Stewart" - Lost in the Pentwater Channel in 1866. I find it remarkable that these ship wreck beams, after so many years in Lake Michigan, have been revealed and now are part of the continuing legacy of Pentwater shipping through our museum.

Thanks to the generosity of Brian and Barbara Stoffer, and Dan Filius, our museum's maritime ship parts collection is continuing to grow. Look for these new exhibit items when you visit the museum next year.

VISIONS OF OUR NEW MUSEUM

OUR NEW MUSEUM WILL OPEN IN THE SPRING OF 2014.

We are going to organize our collection around a number of themes. Eventually, we will have both permanent and rotating displays designed to keep the museum fresh and interesting.



*Officers of the PHS meet with Pastor Mark Lillie and Craig Scheneman at the final closing on August 16, 2012
Seated are Ed Bigelow, Craig Schoenman, Pastor Mark Lillie and Jim Alfredson. Standing are Larry Konopka and Attorney Ron Johnson.*

THE GOAL The concept is to create a “hands on” component for each thematic area. Thematic concepts currently under consideration include the Geologic Processes that formed this bit of land and water that we so love.

THEMES Thematic areas under consideration include Native Americans, Lumbering, Commercial and Recreational Fishing, Agriculture, and Manufacturing. The collection will also be organized to reflect our community with displays featuring the Schools, Government, Businesses, Tourism, and Pentwater Personalities.

DISPLAYS Current items plus items yet to be donated or loaned will be used to organize the collection. The physical items in the collection as well as photographs, posters, signs, diagrams, video and voice recordings will be used to make the displays interesting and informative.

THE FOCUS The major consideration in developing a theme around which to create a display is the collection itself. Do we have items in sufficient quantity and of particular interest to make a display work? That will be the focus of a lot of work over the next year.

HELP! The Museum Relocation Committee will be asking for help in gathering items to make specific dis-

plays more attractive. Currently under development is a display featuring recreational fishing in Pentwater and would like to include a display of small trolling motors used for recreational fishing over the past 100 years would show.

DONATE! We are asking our members and friends to donate or loan trolling motors used for recreational fishing representing the decades from the early 1900's through the 1980's. We'll combine motors, lures, boats, posters, and photographs to create a display representing the history of recreational fishing in Pentwater.

Contact Dan Kelly at 231-869-2471 if you have a trolling motor that you would like to donate or loan to the Society. Motors do not have to be in running condition. They do need to be in good physical shape, that is, they need to look good. We are also seeking photographs, especially photographs prior to 1940, lures, reels, and other items necessary to make this display come alive!

This is our first attempt to “mine” our membership for items necessary to create a display. As we continue our developmental process, there will be others.

A PERFECT TOAST

In the days between the formal closing on the purchase of the First Baptist Church and the summer dinner/business meeting in August, members of the relocation committee thought that some form of celebration to mark the achievement of a major milestone would give the right touch to our announcement of the completion of the church purchase.

We looked for a special way to honor the generosity of the many, many donors and the outstanding work of the relocation committee members and what could be more special, more American than a "Champagne Toast". Larry Konopka gave the toast and his words were spot on. He covered all of the bases, from the long road we traveled to arrive at that moment to where we are going as an organization and as a community. No one could have said it better. Our Society is truly on the dawn of a new era.

As an important note, the committee members agreed that the proper way to fund the celebration was to seek contributions rather than use Historical Society funds. We started by passing the hat among committee members and then hit the street to top the funds off. In less than thirty minutes it was done.

We wish to thank, and encourage you to do so also:

John Carlson, West Shore Bank; Donna Renshaw, Michigan Westshore Realty; Paul Anderson, Anchor Real Estate; Mike Mckee, Mckee Realty; Chuck Smith, Pentwater Township Supervisor; Barbara Burke, Pentwater Township Clerk; Dianne Russell, Gull Landing; Michelle Angell-Powell, Farmers Insurance; Mike Castor, Air Fun Kites; committee members, Ed Bigelow, Bill Bluhm, Bob Cornelisen, Larry Konopka, and Bill O'Donnell.

MEMBERSHIP NOTES

In January of this year a Membership Committee was appointed by the Board to address the issues surrounding the current unwritten Membership Policy for the Society. After much thoughtful deliberation, the Committee's recommendation for a written policy and dues structure was made at the October 2012 Board Meeting.

The Board, in a unanimous decision, approved the following, effective January 1, 2013:

1. The dues year is changed to coincide with the calendar year. An annual dues billing or notice will be sent out to members at the beginning of the fourth quarter of the current year.
2. Delinquent members will be carried for one year. A list of delinquent members to be dropped will be presented to the PHS Board at the first meeting of the new year. A notice will be sent to a delinquent member two months after their membership becomes past due. A final notice "advising that this is their last issue of the newsletter" should be included in the final newsletter of the year.
3. When a delinquent member makes an "Annual Membership" payment, it will be applied to the current year.

4. New memberships received in the fourth quarter of the current year will be counted as paid dues for the coming year.

5. An individual membership includes spouse.

6. The current membership categories will include:

Annual - This category renews annually

Sustaining - This category renews annually

Student - This category renews annually.

Life - This category has no annual renewal

Patron - This category has no annual renewal

Honorary - This category is granted only with Board approval. It is non-dues paying and allows the Board to grant a one year membership to someone that has made a one time special effort for the benefit of the society.

CHANGES IN DUES

In order to sustain our regular Society activities on a solid financial basis, the Board has approved the following changes to the dues structure effective January 1, 2013:

Annual-\$20 Sustaining-\$50 Student-\$3 (No Change)

Life - \$250 Patron-500 (No Change)

2013 dues paid at the old rates before January 1, 2013 will be recorded as "Paid in Full".

NOTE: The above dues changes are not associated with the expenses anticipated for the new museum.

Become a SPOTTER!

You can help the Historical Society record the changes to our community.



Here's what's new around our village. . .

1. Photo of the damage after a late night robbery at the Wishing Well Store.
2. The new Village Information Sign.
3. Photo of the almost completed replacement of the Sanitary line and and new street resurfacing project at North Hancock and Park Street.
- 4 & 5. Sixth Street is closed to traffic during the construction of a larger culvert near the marinas.



THE CHANGING FACE OF THE PENTWATER HISTORICAL SOCIETY

I wonder, was Winston Churchill thinking of our historical society when he said, "To improve is to change; to be perfect is to change often." We are certainly changing; I don't know about perfection, I do know about change.

Of course, the biggest change is the fact that we now HAVE A MUSEUM OF OUR OWN! Wow! What an effort by the Society, to generate the resources, in little more than a year, to purchase the First Baptist Church of Pentwater.

Our new museum, with its spacious grounds, will house our collection, become a destination point for visitors, a gathering place for community, and be a unique display of Pentwater pride.

While we will not take possession of the Church until August of 2013, plenty of changes are occurring as this is written. All of them focused on making our new museum the best possible home for our collection. The new museum will open in the spring of 2014.

The Executive Board is also changing; it will be growing by two. The Board will grow from seven to nine members by adding a Director of Museum Operations, and a Director of Information Management.

Several big changes are in store for the items in our collection. Cataloging efforts have been increased. Personnel have been recruited; hardware and software issues have been addressed to facilitate the process of cataloging our collection.



The new home of the Historical Society.

Everything is going to be relocated. What a task that will be!

Collection items will be displayed in new surroundings grouped by themes. The themes themselves are still in a state of flux. One change is to create a "hands on" display for each one of our themes.

We hope to eventually have a series of rotating displays that change the look of our museum from year to year. Our collection itself will change as we add new items, group them into themes, include a 'hands on' component, and rotate the displays from time to time.

The museum will also change. The expanded relocation committee is looking at what things need immediate attention and what needs can be scheduled for the future.

We have a Grounds Committee that is researching the best way to use the museum grounds. Perhaps a display of Native American Culture prior to the arrival of Europeans. Another idea is to create a display of crops grown in the surrounding area now and in the past.

The public face of the museum's website will change too. A group of people are looking to make the website a place where members and visitors can get information about the Society and all of the changes that are occurring. We want to create a website that reflects the excitement and energy moving through our Society while promoting communication and interest.

The Museum Relocation Committee wants to thank those who have joined the ranks, picked up the gauntlet, and are charging ahead into a new reality for our Society. We need them. We will need more.

We may be asking for your help soon. That may make a change in you!

DUES ARE DUE

Membership dues for the 2012-2013 year were due September 1, 2012. If you see "12", or an earlier year following your name on the mailing label, it is time to renew your membership. The dues amounts are shown on the Membership Application form on the last page of the newsletter. Please send your check to the Pentwater Historical Society at P.O. Box 54, Pentwater MI 49449

20012-2013 OFFICERS & TRUSTEES OF THE PENTWATER HISTORICAL SOCIETY

Ed Bigelow	William O'Donnell	Jim Alfredson	Mike Castor
President	V-President	Secretary	Treasurer

TRUSTEES: Roger Bailey, Myrna Carlin and Bob Childers

MEMBERSHIP CHAIRWOMAN:
Karen Way

NEWSLETTER COMMITTEE
Jim Pikaart Bruce Bates
Layout/Design Photo Editor

PHS EXECUTIVE BOARD - ACTION TO AMEND BY - LAWS

In the past year the Pentwater Historical Society purchased the First Baptist Church to provide a permanent location for our museum. The sale was complete on August 16, 2012, however, the process started long before that. A committee of interested volunteers spent several years of research to find an ideal location, raise sufficient funds, and define the nature and scope of the new museum.

Its goal was to create a first class museum that would be a centerpiece for our community and a destination for visitors and residents alike.

Everything about the operations of our current museum had been evaluated both from the point of view of how to make it better and also how the old will fit with our vision for the new museum. These evaluations focused on questions about the need to develop stronger and more effective communications with our membership; the requirements for computer hardware and software, telecommunications including telephone and internet service; selection and obtaining display materials; general museum operations and lastly, an effective quality control program to insure that we stay true to our vision.

We quickly came to the realization that someone had to have the responsibility and authority for operational oversight as well as

coordination with the board.

To accomplish this, the relocation committee had recommended to the board of trustees that the executive board should be increased from seven to nine members. At the August 22, 2012 annual summer dinner and business meeting, those present were in unanimous agreement. At the October 3, 2012 board meeting the board confirmed the need for two new members for newly created positions, that of a Director of Museum and Director of Information Management.

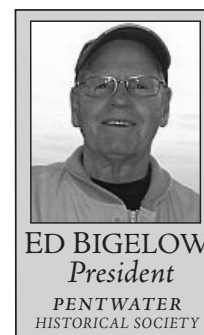
The By-Laws provide that amendments may only be accomplished by a two-thirds vote of the membership in good standing. Three Articles in the present By-Laws: Article XII, Amendment; Article VI, Executive Board; and Article VII, Duties require revision in order to accomplish the desired increase from seven to nine board of trustee members.

At the next scheduled board meeting, January 2, 2013 the board will be asked to approve a proposed ballot concerning the revisions to the above mentioned Articles. If the board does approve the ballot proposal, each member in good standing will receive one in the mail. Because of the two-thirds requirement it is very important that you return the completed ballot as soon as possible.

The major reason for revising our By-Laws is to provide proper

Executive direction for our New Museum's management, operations, maintenance and repairs, upgrades and technical applications. Further to provide proper executive direction to manage the ever expanding information management needs for the PHS Web Site, and the society's increasing requirements for technical systems to support all aspects of our new museum such as servers, computer stations, microfilm station, telephone, WIFI, television and a host of other essential peripherals, hardware and software to provide a quality experience for users of our new museum.

Please consider this article as an early advisement of a very important and necessary change to the corporate laws of our society planned for next year. When you receive your ballot in January, 2013, please complete it promptly and help to ensure that our society will continue to grow and improve as a destination within Pentwater.



NEW ANNUAL MEMBERS

Edward & Barbara Ackerman	Jean Doyle
Katee Heath	John & Betty Larsen
Shelley Lentz	Clark McKeown
Gary & Jean Prosch/Siesener	Peter & Ann Rexford
Peter & Barbara Souza	Sarah Wickham
Richard & Jill Williams	David & Debra Zare
	Debra & Daniel Deward

NEW LIFE MEMBERS

Judy & Larry Pazol Edward & Lesley Reser
Douglas Ruby & Mary Beth Moore

SUSTAINING MEMBERS

Pam & Tony Omer Dan & Teresa Root Mark Shotwell

DECEASED

Macy Mullen George Cluchey Shirley Reser

CORRECTIONS & APOLOGIES

We missed showing David Roseman on the
Patrons listing for his \$1,000 donation.

Thank You David!

MEMORIAL DONATIONS

From: In Memory Of:

Ed Bigelow	George & Helen Cluchey
Bill & Gail Bluhm	Ken Lites, Duncan Erley, Nancy Grant and Ann Reser
Paula DeGiorgio & Frank Galante	Jack Webber
Debra A. Deward	Daniel J. Deward
Lois Donohoe	George Cluchey
Linda Eisenlohr	Willowdean Tiller
Ilene Fox	George Cluchey
John & Ethel Fox	George Cluchey
Dolly Geers	Shirley Ann Reser
Barry Miller	Pauline Miller
Bennie & Mary Naumann	George & Helen Cluchey
Tave Reser	Shirley Ann Reser
Ervin & Susan Silvis	George & Helen Cluchey
Jackie Stevens	Kenneth Lites
Shirley & Nena Stutes	George Cluchey
Gene & Nancy Tosch	George Cluchey
From:	In Honor Of:
Jim & Susan MacGregor	Ed Bigelow
Lesley & Edward Reser	Shirley Ann & Ted Reser

New Donations to PHS Museum

The Pentwater Historical Society encourages our members and the community at large, to continue to grow our artifact collection of Pentwater's history. When the First Baptist Church of Pentwater, our new museum location, becomes available for use, we will then be able to display more of Pentwater's rich history to our members and all interested visitors.

We have acquired several new items of interest:

RIGHT: Glass Bottles found buried under Sixth Street during recent street excavation.

The bottles range in manufacturing dates from 1840's to 1940's.

These old bottles were noticed by the sharp eye of Al Docter who, on his daily walk, noticed the bottles and informed Ed Bigelow who collected the bottles and had Dan Hoekstra, proprietor of the Silver Hills Antiques

At Gustafson's, date the old bottles for the museum.

Old ship's timbers thought to be from the wreck of the propeller ship Mary Steward.



Pentwater Yacht Club member Jack Patterson donated these big, four foot wide laminated photos picturing Pentwater lake in the 1930's.



FAR LEFT: Sailboats race in front of the Yacht Club

LEFT: A classic Wood Speedboat pulling water skiers with PYC in view.



LEFT BELOW: Cars and people watching sail boat races from the former city dock.

BOB'S CORNER (by Bob, of course)

Prohibition in Pentwater! Here we go again....or should I say...still?

As I have written in the past, Prohibition started in Pentwater during the Civil War when the troops were away fighting. With no one here to protest, the law was pushed through locally.

I suppose if you want to look at it through the eyes of the Woman's Christian Temperance League, The Law and Order League, the Anti-Saloon League and a bunch of other anti-everything leagues they're ideals were....I guess you could say, "of good intention?" It seems there was a lot of our good men spending their whole weekly pay in the bars and gambling houses of our town. Gambling houses and houses of ill repute? I can't believe it! In my town? Yes, there were a few. Tell you about it later.

Now, back to the subject. Pentwater and Michigan for that matter were among the first to really get behind the movement. Through some legal maneuvers Michigan was not the first to ratify the amendment. That distinction goes to the state of Mississippi and shortly after that Virginia, Kentucky and South Carolina took similar action. Michigan was in a whole bunch of states that followed. Another point that fascinates me is this bill in one shape or another had been before Congress for more than 40 years! It had been the law in Pentwater before that. As with most of the rest of the country, the enforcement of the law locally was a matter of who was in power and how much they really wanted to enforce it.

Now there was another war at hand, WWI. The assorted "leagues" saw the opportunity to finally get the bill through congress. "The resolution was adopted by the senate on August 1, 1917, by a vote of 65 to 20, and by the house of representatives on December 17 by a vote of 282 to 128. House amendments were adopted by the senate December 18th." On January 16, 1919, less than thirteen months after the adoption of the resolution by congress, ratification of the amendment by the states was accomplished. No other proposed amendment to the Constitution has been adopted with such speed. Two small items that were overlooked in their zeal to get this into law. What are the churches and other religious community who have used wine in their services for a millennium going to do. "Well, it's the law and no good citizen of this land can use those nefarious evil spirits in any kind of service, period! Use grape juice instead"

Grape juice? Yeah, right.

What is this you're saying? Am I starting to see the first little dent in this righteous, sterling law? "You mean to tell me we can't use wine in the religious services of the church of the _____ (fill in the blank)?"

"This here law says you can't and it's the law."

"Ok, we will just see about that!"

The second item was "health bitters", for medicinal purposes, of course. Some of these were basically whisky just with a different name and label. If you were really good friends with your doctor, you could get a prescription for alcoholic beverage, for medicinal purposes. There were any number of people making bitters to 'improve your health' and their pocketbook. They were touted as a cure-all for what ails you. If nothing ails you, it can cure that too. It's a hoot to read what ailments bitters would cure.

Something you might not be aware of is the smuggling operations. Canada had no prohibition laws and they brewed some nice Canadian whiskey over there. Large Great Lakes ships were coming and going in and out of Pentwater harbor all the time. It was nothing to see eight to ten ships a day in our harbor. So what's so hard about adding a pallet or two or three of "other" freight to your load? "But couldn't the Coast Guard intercept these ships?" I suppose they could but for two reasons; one, the Coast Guard boats were not that fast, maybe 12 knots at best? And two, "I suppose I could intercept your ship; but first, how much are you paying us to look the other direction, or I can't inspect every ship that comes into Ludington and Pentwater. There's too many."

Now, fast forward congress. We got more problems on the horizon. The war is over, the 'doughboys' are coming home and want to celebrate with a beer. "Surprise, surprise, we ain't got no beer, nor whisky, no nothin'!" "Well, that's just plum fool crazy! I fought for my country and I want me a beer to celebrate and you don't be givin' me no near beer stuff. I want a real beer!" Near beer was just that. A bunch of stuff in water without the alcohol to taste like beer. "If I can't get no beer or whisky, I'll just make it up on my back porch or out in my garden shed. Second dent in the righteous law. Pentwater for the most part turned a blind eye to the liqueur laws or as I said earlier, whoever was in power decided how vigorously they wanted to enforce the law. For the most part, it wasn't. I don't think even the "leagues" knew what was at hand with the implementation of the law. All hell was about to break out. The Prohibition wars were about ready to start.

Visions

OF THE NEW BAPTIST CHURCH



1. Pastor Mark Lillie speaks at the ground breaking ceremony for the New Home of the Baptist Church of Pentwater.
2. Concrete has been poured and the finishing crew is power troweling and putting the final touches on the big slab for the New Baptist Church.
3. The concrete has dried, the rough walls are up, and Paster Lillie with members of the congregation conduct the first worship service at the beginning of their vision of the new church.
4. Stacks of roof trusses await placement atop the rough walls.
5. A crane lifts one of many roof trusses while carpenters carefully position each one across the large span. Smaller trusses will be placed above to make an interesting roof line.



USE THIS FORM TO BECOME A MEMBER OF THE PENTWATER HISTORICAL SOCIETY

NAME _____

ADDRESS (The Address where you have your important mail sent when it absolutely positively has to get there!) _____

E-MAIL: _____

CITY _____ STATE _____ ZIP _____ PHONE _____

TYPE OF MEMBERSHIP: •Patron \$500* •Life \$250* •Sustaining \$50*
•Annual \$20* •Student \$3 (* Includes Spouse)

STATUS: ☐ New
☐ Renewal

Would you like to be contacted to participate in society activities? If so, your area of interest is: _____

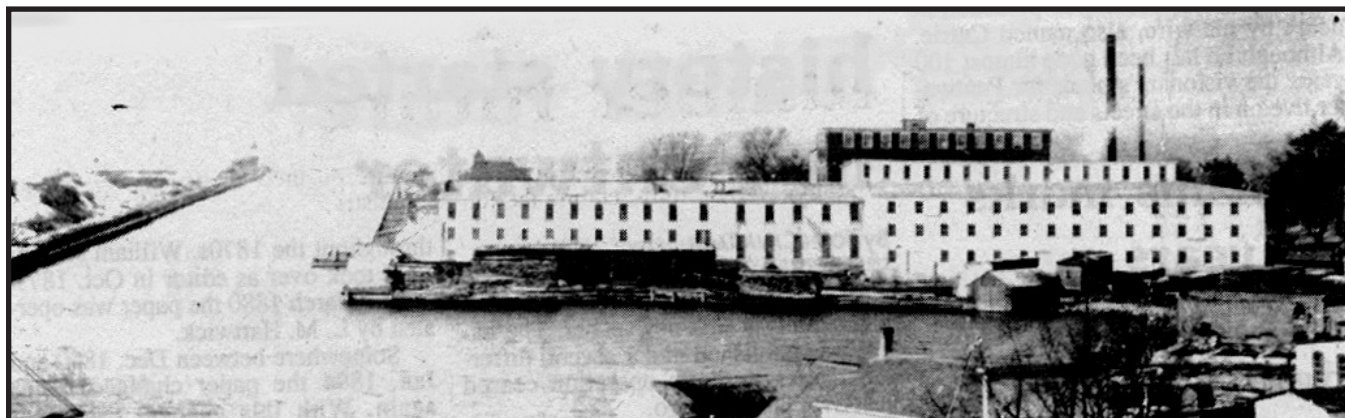
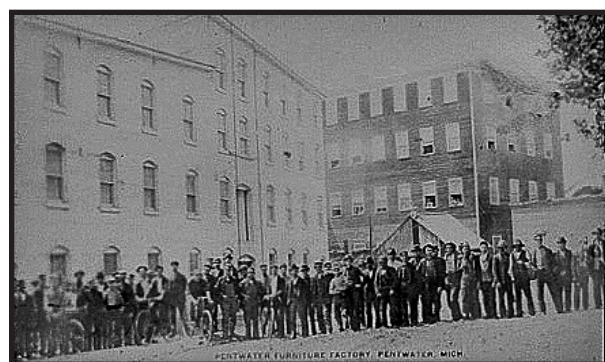
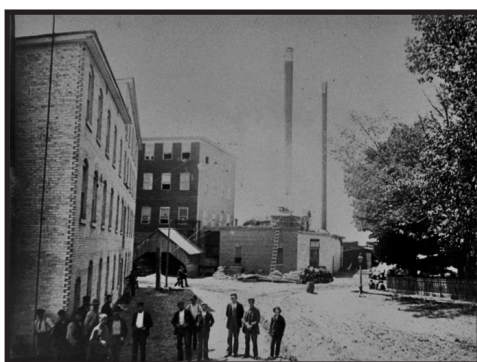
☐ Yes, Please send the newsletter by e-mail. My e-mail address is: _____

PLEASE MAKE CHECK OR MONEY ORDER TO:
The Pentwater Historical Society, P.O. Box 54, Pentwater, MI 49449

AUTHORIZED
SIGNATURE _____

RIGHT: Employees take a break at the Furniture Factory. The power plant stacks are seen in the background.

FAR RIGHT: Employees of the mill appear to have gathered to have their picture taken.



A photo taken before 1898 shows Charles Mears' sawmill along the channel. Mears' mill was the largest in town and had a prime location for shipping and receiving lumber. Behind the mill the top floor of Pentwater Furniture Factory is visible.



Hancock Street looking north in 1875.



PENTWATER
HISTORICAL
SOCIETY
P. O. BOX 54,
PENTWATER,
MICHIGAN 49449