



HOW I GOT TO PENTWATER



By Mary Marshal

I thought I discovered Pentwater in the summer of 2012 when my husband Eric and I drove through on our way back from checking out an RV park in the Silver Lake area. We had traveled from our home in Livingston County, MI for a long weekend in the Ludington area. It was our second or third trip that summer to Lake Michigan as we took advantage of our RV as an easy escape from a life that was much too busy. We were on the same fast track as other professionals in our area, and we were losing sight of anything but work and weekends at home doing laundry, mowing lawns or shoveling snow.

A weekend away in the RV was such a welcome break, and we longed to see Lake Michigan roll onto her shores to center us once again. Knowing that the lake had such a powerful impact on us, we dreamed that someday we would move closer to the lake and enjoy our retirement days in a small village near the beach.

Our Sunday morning drive from Ludington to Silver Lake was lovely, and although the lake views were breathtaking, Silver Lake was not the small village we had been looking for over the years.

On our way back to Ludington, we approached exit 154 from US 31 north. Eric asked me if I had ever been to Pentwater, and I responded that I never had.

Eric took the exit and we turned west on Monroe. We passed Charles Mears Barn, and traveled the twisty winding road, the type that reconnects Eric to roads he encountered as a boy in England, and then we saw

Pentwater Lake. It was a lovely morning and Pentwater Lake was calm, surrounded with cottages of dreamers looking outside to plan their day. This looked promising.

We made the turn at the Welcome sign, and saw the older part of the Village unfold before us and we were smitten. We saw the masts towering around Snug Harbor, and we were primed to fall head over heels. We parked down by the marina and walked along Hancock, and we knew that we had found the one. This was the village for us. We were in love.

A glimpse in the windows of the realtors helped us to see that we could love Pentwater with our head, our hearts, and our wallets, so we drove around and looked at houses, and on our way home, I proposed a crazy thought.

(Continued on page 11)



Mary Marshal

TOP LEFT PHOTO: Jerry Meehan and my grandfather Stanley Clark, Sr. are standing on the beach at Pentwater while my aunt, May Caroline Clark and uncle Stanley Clark, Jr. play in the water.

TOP RIGHT PHOTO: The four Clark children playing in the water. My father, Dick Clark, is the young boy standing in front of his sisters

REPORT OF THE MUSEUM

The work of creating and managing the museum has been carried out by a group of volunteers who have met each Tuesday morning for the past three years. During that period, they worked under a variety of organizational structures developed by Bob Cornelison.

This year the group has been reorganized into a management team with seven distinct sub groups, each with its respective responsibilities. The team members, both individually and collectively have done an amazing job.

This report provides an update on their activities and an opportunity for you to join, to build friendships, and to learn. Please take a look at the "Areas of Responsibility" and "Future Goals" to see how you might contribute. We would like to hear from you.

MUSEUM DIRECTOR

Ed Bigelow

NEW POSITION, NEW CHALLENGES

Director of the Pentwater Historical Society Museum is a new position and comes with the responsibility of overseeing tasks, changes, improvements and long range planning. This is accomplished by a standing management committee chaired by the director.

Areas of Responsibility:

- Create annual budget.
- Maintain museum master calendar.
- Develop space allocation for museum activities.
- Oversee daily museum operations.

This Year's Highlights:

- Opening of the new museum.
- Development of a museum operating budget.
- Completed the first year of museum operations.

Future Goals:

- Planning for a future building to be erected on the north side of our lot.
- Coordination with the Museum Curator and Historian to provide timely upgrading and enhancement of artifact displays.
- Assist in planning and implementation of adequate storage for all artifacts that will not be on public display.

OPERATIONS MANGER

Amy LaBarge

Areas of Responsibility:

- Manage museum host program.
- Organize and oversees gift shop.
- Develop and maintain operations and procedures handbook.

This Year's Highlights

- Set up schedule for new museum hosts.
- Completed sale of old gift shop merchandise.
- Researched comparable museum operations and procedures for handbook.

Future Goals:

- Recruit additional volunteers for host program.
- Develop line of historical Pentwater items for gift shop.
- Complete operations and procedures handbook.

CURATOR & HISTORIAN

Dick Warner

Areas of Responsibility:

- Manages museum collection.
- Directs final disposition of museum items.

This Year's Highlights:

The Curator and Historian assisted by Renee Berggren Connoy and Amy LaBarge accomplished the following:

- Located display fixtures for the museum to purchase.
- Developed themes for the display cases.
- Put together a floor plan that complimented the museum structure.
- Selected artifacts to be used in the museum and merchandised the floor plan.
- Had built a fixture for merchandise we are selling.
- Created two forms that we are using to track incoming items that are donated or loaned to us for exhibit.

Future Goals:

The following is what our team wants to accomplish in 2015:

- Acquire outside exhibits on loan for our museum.
- Broaden the number of themes to be displayed.
- Create more hands-on exhibits.
- Insure the space behind the stage is fully developed and the studio project is completed.
- Put in a new feel and look for existing fixtures.

PUBLICITY & SPECIAL EVENTS COORDINATOR

Debbie Deward

Areas of Responsibility

- Manages special events.
- Coordinates publicity.

This Year's Highlights

- Grand Opening Celebration.

Special Events Projection for 2015

- Spring Dinner May 27, 2015.
- 1st Jubilee Anniversary, Saturday, May 30, 2015.
- West Michigan Pike Tour Special Exhibit June 1 – July 15, 2015.
- Lost & Found Shipwrecks of Michigan July 15 – September 15, 2015.
- Father's Day Pancake Breakfast under the tent at the Museum. Sunday, June 21, 2015. (Same weekend as Art & Craft Fest.)
- Summer Tea Party under the tent.

MANAGEMENT TEAM

at the Museum. Sunday, July 19, 2015. (Weekend of Garden Walk)

- Summer Dinner, Wednesday, August 26, 2015.

Future Goals

- Develops policy for use of buildings and grounds.
- Cookbook for 2017 for 150 year celebration.

Future Goals:

Note: We continue to rely heavily on volunteer labor whenever possible. Please contact Glenn Beavis at 231-233-2864 if you would like to lend a hand.

- Front door refinish and general entryway enhancements.
- Minor landscaping.
- Renovation of back-stage hallway and work rooms.
- Renovation of downstairs main & auxiliary rooms including new ceiling drywall, lighting, and paint.
- Fabricate and install 32 replacement steeple awnings. (a major effort)
- Furnish upstairs balcony area to better support research activities.
- Complete refurbishment of stained glass windows.
- Pending Funding: New ramp for handicapped patrons.
- Pending Funding: Second building on premises to display larger artifacts currently in storage.

BUILDING & GROUNDS MANAGER

Glen Beavis

Areas of Responsibility:

This 2013 carryover task was previously lead by Norm Shotwell and has involved extensive support from a long list of volunteers - many of whom are not directly affiliated with the PHS but wanted to lend a hand. Several of the more significant tasks are highlighted below:

- All new mechanicals including electrical, heat, lighting, and plumbing.
- Refurbished stained glass windows. (still in process)
- Resurface main floor and install electrical outlets to support cabinet lighting.
- Construct a first floor bathroom.
- Repair wall surfaces.
- Paint main floor (except ceiling), balcony, and upstairs office areas.
- Assisted with the transfer of artifacts to their new location.
- Maintenance & Repair Items
- South side roof repairs.
- Added gutters to north side of building in an attempt to address basement water seepage.
- Repair & clean out plugged south side gutters.
- Special Project – Recovery and temporary storage of a late 19th/early 20th century 30' pleasure boat named "Katahdin." This was donated by Mr. Garth Larson of Hart Michigan and now lies in temporary covered storage at Charlie's Marina.

TECHNOLOGY MANAGER

Jim Ege

Areas of Responsibility:

- Oversees and coordinates the organization's technology needs including equipment and software.
- Works with Museum committees to maintain and update the PHS website.

This Year's Highlights

- Purchased two digital Picture frames and loaded photos and videos to display images in the archives.
- Purchased laptop computer for easy archiving of artifacts by volunteers.
- Purchased an updated version of Archival software with networking and photo search capabilities.
- Purchased a high quality digital camera for taking images of artifacts and activities at the Museum.
- Purchased a wireless Printer/scanner for Museum use.
- Cleaned and set up Microfilm machine.

Future Goals:

- Train volunteers to use the new equipment and software to begin archiving the collection.
- Begin to phase out two desk top computers and purchase two additional lap tops to make it easier to archive artifacts.
- Assist the curator and historian in advertising and implementing the Michigan Pike Exhibit in 2015.

DESIGN

Norm Booth

Areas of responsibility:

- Generates and oversees new graphic, architectural, and landscape museum projects.
- Provides creative designs for interior and exterior of buildings.
- Develops landscape concepts and plans.

This Year's Highlights:

- Designed improvements for the clarity and appearance of the museum's front entrance.
- Prepared (by Gail Zink) concept sketches for the balcony technology and research area including built-in shelves/cabinets for archive materials on the north and south walls, a signature counter top along the balcony edge, and tables where documents can be studied.

Future goals:

- Seek funding to construct proposed ADA access and information kiosk at the museum entrance.
- Design and construct a new out building to house Katahdin and other large artifacts while incrementally implementing the Landscape Vision Plan.

RECIPES WANTED

Start digging out your family recipes!

The PHS will be assembling a cookbook and we need your help. We are looking for your grandmother and great grandmother's **scratch** recipes along with a fond memory or story that goes along with the recipe. You are welcome to send me an e-mail at: dadeward@outlook.com with thoughts, ideas etc. More to come in the next newsletter!

Be in touch! Debbie Deward

NEW ANNUAL MEMBERS

Tom & Debbie Walterhouse Charles Totten
Wayne Camper Gary Nicholson
Don & Trish Davidson

NEW LIFE MEMBERS

Two new Life memberships that are being given as Christmas Presents by a most generous parent and so the names must remain anonymous for now.

CONVERSION OF EXISTING TO LIFE MEMBERS

Gail Zink & Norm Booth
Edward & Barbara Ackerman

SUSTAINING MEMBERS

Mike & Trisha Konopka Garth & Judith Warner

MEMORIALS

FROM:

Dean & Maureen Gustafson Dolly Geers
Beverly & Jeffrey Fulton Charles Bigelow
Marilyn & Alden Loomis Sam & Jane Morrison
Mr. & Mrs. John C. Anderson Sally Ryan

IN MEMORY OF:

Millie Bennett

FROM:

IN MEMORY OF:

Mazine & Roger Macloed	Tom Sturr
Ed Bigelow	Allen Aerts
Ted & Joan Cuchna	Tom Sturr
Dolly Geers	Tom Sturr
Ed Bigelow	Fred Seaman
David Jahnke Family	Jane McKeivitt
Mary Ann Combs	Fred & Esther Seaman

DEATHS:

Gladys Panis 12/15/13 Lois Curtis 8/8/14
Hollis Johnson Tom Sturr

DONATIONS

Don Carter Richard & Sylvia Warner

The Mystery of the Katahdin

When the Pentwater Historical Society needed to move its largest and heaviest, and one of its oldest donated artifacts, who did it call upon for help? Not Ghostbusters!

They called in muscle from the Pentwater Service Club to help move the Katahdin, (pronounced ka-tah-din) a 30-foot, 3,000-pound wooden boat that resembles, and some say once served as, a tour boat that operated on Pentwater Lake some 100 years ago. The boat was donated to PHS earlier this year by Garth Larson, owner of Ace Hardware in Hart, whose grandfather purchased her many years ago.



This photo of a boat on Pentwater Lake that resembles the Katahdin is displayed on a historical sign board located on the north side of the Pentwater Harbor channel.

A total of 18 volunteers from the two community organizations joined forces to move the prized artifact from what was once Larson's grandfather's barn near Hart, where it sat untouched for nearly 45 years. Katahdin's temporary new home is Charlie's Marina in Pentwater, which has generously agreed to store the boat until plans for her permanent display by the PHS are put into place. The move was a lot trickier than we thought it would be, but we pulled it off in about 90 minutes because of all the volunteers who turned out to help, said Glenn Beavis of Pentwater, who headed up the planning and execution of the move.

Volunteers who helped move the boat included Doug Bacon, Glenn Beavis, Ron Beeber, Ed Bigelow, Norm Booth, Ron Christians, Chris Dunn, Nick Fekken, Dan Filius, Bill Gardy, Gary Hickman, Jim Howell, Larry Hulburt, Dick Johnson, Dave Kidder, Bruce Koorndyk, Roger MacLeod and Dick Warner.

It was carefully slid out of out of the barn, turned around, and then rolled on a specially-built trailer without rip-



TOP LEFT PHOTO: Members of the Service Club give the "old heave ho" in sliding the Katahdin out of the barn.

TOP RIGHT: This plate on the boat names A. C. Preble as possible builder but more information is needed.

FAR LEFT: This old postcard shows a launch very similar to Katahdin on Pentwater lake. The flag names it as "Donna".

LEFT: The original engine.

ping up the bottom of the 100-year-old boat. The trailer was fashioned by Doug Bacon and Glenn Beavis of Pentwater from two boat trailers donated by Patterson Marine and West Coast Marine, both of Pentwater.

PHS President Dick Warner expressed the hope that there are folks out in the community who can shed light on the history of the Katahdin and answer questions of where did she spend her first 50 years and who were the owners and builders.

As word of Pentwater's new Historical Museum has spread during the past few months, the PHS has been receiving a steady number of relics donated by people from around the world who have connections to the area.

To learn more about the process for donating items, go to pentwaterhistoricalsociety.org and click on "ways to help". The museum is open to visitors on Thursday, Friday and Saturday from 1-4 p.m. through October. In the months that follow, PHS volunteers will continue their behind-the-scenes work before the museum reopens to the public in May of 2015.

Researcher Benson Gray corresponded with Michael Hradel about the possible origins of the Katahdin

Hi Mike,

This looks like a great project and an interesting puzzle. I am not aware of any Maine boat builders named A. C. Preble. Is there any other information on the name plate and can you send me a picture of it?

The list of Maine canoe builders at <http://wcha.org/legacy-pages/maine-list.htm> is clearly not complete but it doesn't include anyone named Preble. A quick search the 1914 Maine Register shows that Davis and Preble were listed as building canoes and snow shoes in the Elliottsville Plantation/Monson area as shown below.

The Maine canoe builders list referenced above has several people named Davis who were building canoes in that area over the years. Let me know if there is anything else that I can do to help and please let me know if you get more details.
Thanks, Benson Grey

A LANDMARK YEAR!

Beginning with the Grand Opening of our new PHS building and museum held on May 31, 2014, this year's museum season was a tremendous success! Without exception, all comments received from our museum guests were very positive and filled with praise for a job well done. Our guests enjoyed the exceptional layout and display of our many excellent artifacts, lighted display cases and ease of viewing. The wide aisles to view the varied collection of artifacts presented allowed for many people to move about with plenty of room to spare during their visit. Some guests offered written comments on how to make the museum visit even better. These comments were much appreciated and useful to us in making improvements.

It is most apparent that much of our success can be attributed to well placed signs within our community. A number of newspaper articles, radio broadcasts and of course, the person to person contact caught the attention of local area people and our summer visitors too. The previous greatest number of visitors to our old museum location occurred in 2007 with 601 logged in the guest book. In the current, year including our Grand Opening, nearly 1900 people enjoyed visiting the museum. Our museum guests came from 37 states and as far away as Australia, Ukraine and China! The building itself, the former Pentwater First Baptist Church located on the corner of First and Rutledge streets, is a compelling attraction. The museum hours were expanded to give visitors an even greater opportunity to learn and enjoy. It was open for visitors June through October, one month more than previous years.

Our museum success in 2014 is certainly because of the 68 people who were our host volunteers at the museum. The volunteers welcoming smiles and willingness to make our museum guest feel appreciated for their interest in Pentwater history was a big reason for a successful season. This year we scheduled two hosts daily at the museum to ensure our visitors comfort and safety. Because of the extraordinary volunteer work from many of our members, The Pentwater Service Club volunteers, other non-member volunteers and our excellent contractors, the many months of restoration work to our building was accomplished on time for our Grand Opening Event. Without these fine people and organizations and the efforts given, our new museum would not have happened...

A huge "Thank You" to all the volunteers, and also to our museum guests for their donated contributions to help fund our general operating expenses. Please note on your 2015 calendar visits to the museum and enjoy our refreshed displays that will include many new donated items of Pentwater history.

FROM THE TOP:

Pentwater Woman's Club Annual Booklets. From 1951 to 2001. Donated by Dolly Geers.

Railroad Car Barn Jack. Manufactured by Templeton Kenly Simplex Co circa 1850 to 1920's. Donated by Bob Larson, Maint. Dept. & Carl Youngstrom Mgr. of the Pentwater Wire Products Co. This jack has been at the Wire Products for many years and may have been received when the Pere Marquette RR left Pentwater in the late 1920's.

Ironrite Ironer Circa 1947. (Also known as a Mangle.) Donated by Amy LaBarge & Ron

Beeber. This machine was manufactured in Mt. Clemens, MI. and comes to us complete with the Instruction Booklet.

Post Office Boxes from the old Pentwater Post Office. Circa 1940's to 1974. Donated by Mary Lou Mitteer in memory of her husband Guy Russ VanNortwick.

Osborn Insurance Sign. Donated by the Don Lambrix family. 1940's photo shows the sign on the Lites Pharmacy building. More information is needed about this sign. Contact the PHS website.



Now is the Time for Holiday Giving

As the end of the year approaches and you are looking for some tax deductions or Christmas presents for your family please think of our museum. Although a gift membership is a great present, a gift to a museum project is a gift that will last far longer and help future generations remember Pentwater as what it was and is. We have some great ideas. The Pentwater Historical Society Museum is in the process of developing the balcony area, formally the choir loft, into a work area to archive donated artifacts and build a searchable database for the entire collection. It will become a vital research area for people wishing to find out more about Pentwater's past. The project will include adding shelving, tables and counters to store artifacts and printed materials and areas for computer equipment to assist in the process of archiving. Tables for working group meetings will also be included. The project target is \$10,000. Al LaBarge has donated the first \$5,000. We are looking for individuals who wish to donate all or any of the additional \$5,000 needed to complete our goal.

Additionally there are several other projects that are in need of funding. We would like to upgrade the front door entry area of the museum to make it more attractive at a cost of \$1000. The upgrading also includes landscaping for the front area for an additional \$1000. We would like to work on the area behind the stage by painting, adding shelving and working on the diorama at the back of the stage area for a total of \$1000. We need archival storage materials to protect the artifacts for future generations for an estimated cost of \$500. As Pentwater is a big bicycling community we would like to put a bike rack out front of the Museum for our visitors for \$500.

Donations can be in any increment that you wish. Set your own comfort level. Just let us know which project you're interested in supporting. In many cases if you donate a full amount (i.e. the bike rack) we can put a plaque with your name or your family's name on the project so museum attendees will know that you have donated to Pentwater's future. Equally important, your gift makes a well-rounded first class museum possible.

Pump Peddle Reed Organ made by Story & Clark, Chicago IL. Circa 1889. Appraised value: \$6,500. Donated by Sharon Post, who is playing the organ, and sister Elaine who is standing by.

First Baptist Church Service Hymnal given to the church by Anna Heaster on June 27, 1933 and donated by Ed Bigelow to accompany the Pump Peddle Organ.

Seltzer Stoneware Water Bottle. Made in Seltzer, Germany. Rare and over 200 years old. Circa 1806 to 1830. Donated by Jim and Yvonne Reinsch.

Women's Bicycle "Crescent Emblem" was displayed in the Pentwater Drug Store operated by D. D. Alton, from 1895 to 1905 who was Ed Pierce's grandfather. The Emblem shows the date of 1901. Crescent Bicycles may have been sold or ordered from the Drug Store. Donated by Ed Pierce



Native American Indian

articles were received including this **Wood Indian Chief Carving** standing 3 ft tall. Donated by Dick Warner.

An Indian Basket Made by Irene Lewis of the Ottawa Tribe of Grand Traverse Bay about 1950 and was given to Fred & Dolly Geers.

The Dumaw Creek Site Book George Quimly wrote this book about the seventeenth Century Pre-Historic Indian village and cemetery in Oceana County. Donated by Ed Pierce.



What's happ'n in the Village.

See something going
on in the Village?

Grab your camera, take a
photo and send it with a brief
discription to the Pentwater
Historical Society's website at:
pentwaterhistoricalsociety.org

*RIGHT: Picture of our building's steeple
with one louver removed. This is a project
to replace all 32 louvers that is under the
direction of Glenn Beavis and with help
from the Artisan Center. Plans are to
begin this project this month. The
removed louver is for getting dimensions,
design and material requirements.*



*This house on Rush Street between Second and Third Streets
is being raised to add a full basement.*



*A new home site is being started in the Madison Ridge
Development on Crescent Drive.*



*A major addition is being
added to the Trent
Witteveen home at
863 Park Street.*



*The Yacht Club held their
annual Wooden Boat Show
this summer. Carefully pre-
served older boats, engines
and parts shared space with
newly built wooden boats.*



*The Pentwater Yacht Club was the host this summer for over 40 Ensign Class sail-
boats and their owners and crew members. A long weekend of match races provided
some spectacular views of the boats on the lake and transiting the channel.*



OUTHOUSE TREASURES RESCUED

By Ed Bigelow

Every once in a while, we get surprised by happenings that seem to have no rhyme or reason! This was the case for me one day in early August of this year. On this day, I was in our museum when Michael Sherman came in with a question, or more rightly a request. It seems that the Sherman brothers, Michael and Marty have a very unusual hobby; "Digging up old outhouse" pits to find vintage collectables or artifacts from the past. Now you must admit, that this is a most unusual hobby and I am quite sure not a hobby that most of us would consider to be very high on our list of fun things to do in our spare time. Well, I mulled this request over and said let me check with our President, Dick Warner and I will let you know. After contacting Dick we agreed that it might be worthwhile to let them dig up the old First Baptist Church outhouse locations and perhaps we would be surprised by the results. We sure were surprised to say the least.

Why dig up outhouse holes? Let me attempt a rational explanation to the question. In the "days of outhouses," not only were the little buildings used for the primary purpose of body waste disposal, but also for getting rid of many household items no longer wanted or needed by the family. In fact, for our Village of Pentwater, a common dump site had yet to be established as a place to dispose of household unwanteds, ergo use the outhouse hole. I believe that the days of the outhouse came to an end when the village started a common dump site on Madison road where the DPW building is now located. Most likely, this dump site was used perhaps as early as the 1930's until trash trucks came along and a more sanitary method of refuse disposal was augmented. By the way, when the dump was eliminated a favorite past time of shooting at rats also came to an end for us wannabe hunters!

On August 9, 2014 the Sherman brothers went to work and exposed three former outhouse holes on the western edge of our two lots, just under the present day tree line of the property. To our surprise, a total of forty-two artifacts emerged, were retrieved and donated to our museum by the Sherman brothers. Apparently no artifacts were found that were of interest to the Sherman's such as old coins or specific types of rare bottles. A few weeks later Michael Sherman stopped by the museum and donated over 100 other Pentwater out house artifacts that had been retrieved by him and his

brother Marty in 1995-6 when they worked the Pentwater area quite extensively. This tremendous collection of "Buried Treasures" is now available for viewing. It includes the following type of items in various sizes and colors ranging from beer, whiskey, perfume, medicine, poison, fingernail polish, and chemical bottles, also jars such as Mason and Ball, some with and some without metal lids. A number of chamber pots with and without lids, light bulbs, porcelain cups, saucers and plates, figurines of various sizes, a Majolica vase, Vicks Vapor Rub, a pocket watch, drinking glasses, a horse shoe and a file, pottery crock pots, ink bottles, a beehive jug, several clay tobacco pipes, and open Pontil candle holder,



Michael Sherman labels some of the "Outhouse Treasures" found on the property.

a cruet bottle, a china doll head and a Independence Hall, Centennial Glass Bank 1776 - 1876. What is amazing is that with few exceptions all these artifacts remain unbroken and in good condition considering that some date as far back as the mid 1800's when they were buried in the location of a former out house!

I know, you are thinking, YUCK about these stinky old items for our museum! Well here is a little logic to ponder on nature's process for cleansing buried treasures. The common practice in the days of outhouse use was to apply either a layer of lime or charcoal ash periodical-

ly to assist in keeping the odors at a minimum. Also these little buildings were generally located away from the home and near the property line as a way to keep quality air in the house.

According to the Sherman brothers, the natural action of rain and snow melt over many years, would create a cleansing effect down through the filled in outhouse hole and its artifacts, as well as combining the numerous layers of lime and charcoal ash into a crust layer they could discern when using a probing rod to locate a hole site. Notwithstanding this natural cleaning of these various types of household items, they have all been well cleaned with lots of suds, cleaners etc. and are now very safe to display, touch and handle!

Now that I have taken the time to share about this wonderful collection of "Buried Treasures" with you, it only follows that you should plan a visit to the museum in 2015 to actually see these ruminants from days gone by on display. Many thanks to Michael and Marty Sherman for gifting these out house treasures to the Pentwater Historical Society museum and for providing circa dates of these Artifacts as well.

BOB'S CORNER

(by Bob (Childers), of course)

NEWS FLASH!

From my desk high above the village in the palatial, luxurious penthouse office suite of the Pentwater Historical Society, I see that our bridge across the channel is in trouble! Can you believe it? I for one am a gassed. For several weeks the bridge has remained open to allow ships and commercial fishing vessels to pass through unobstructed. Although aiding the vessel operators, this does present a problem for the village folk living on the west side of the lake insomuch as they are forced to drive around the lake to do their shopping and conduct business. Estimates for building a new bridge are in the neighborhood of a princely \$150,000. This sum is particularly prohibitive as an unsupported project for the residents of Pentwater since the state is not interested in funding this project.

Engineers from the state have inspected the bridge and report the bridge is in very poor condition with gear and tracks out of alignment and some of the pilings and other parts badly rotted. It was the opinion of the engineers the bridge should be removed as soon as possible and ferry service reinstalled in the interest of economy. You may remember for many years Pentwater operated a ferry across the channel. When the bridge was installed it was done as a matter of convenience to support the greater weight of loads the original ferry could not handle. Some of you might remember back many years ago when a new boiler for the Pentwater Furniture Company was off loaded from the railroad car and loaded onto the ferry, the ferry sank. Had it not been for the channel being dredged at the time and the dredge having the strength to lift the boiler, the boiler and the ferry might still be at the bottom of the channel.

The question arises if the ferry were to be reinstalled a man could be paid \$12.00 a week. Present costs for a two-man crew would run \$10.00 a day. To pay for a new bridge a special tax could be raised to operate and maintain the new bridge was proposed by the village council. With the known animosity to any additional new tax on the residents, we the editors of this paper do not see this as a viable alternative. Originally the bridge was given to the village by the Pere Marquette Railroad Company about 20 years ago and has operated quite amicably all this time. Like any other machinery made by man it does wear out over time and needs to be repaired or replaced. It is anyone's guess the amount of times a day that bridge is opened and closed. Further reports to follow as more news becomes available

ABOUT THE BALCONY

The PHS Museum's balcony is a beautiful unfurnished space above the museum, with 3 splendid stained glass windows in near-perfect symmetry to the museum building below. With just 2 walls of cabinetry, generous archival storage, broad work surfaces and effective lighting, this space could be respectfully molded into "Pentwater Past Times"--a research technology center that invites its visitors into the museum's considerable archival materials & hands-on IT equipment.

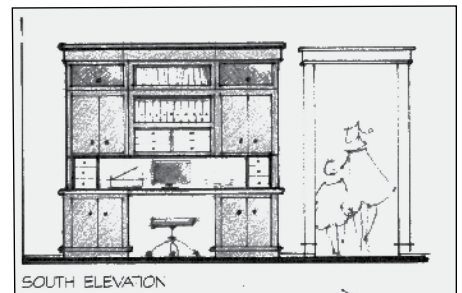


Jim Ege is organizing equipment for the technology/media center on the balcony.

Gail Zink has prepared a series of drawings for possible cabinetry designs for the technology and research area of the balcony.

Adding a broad wood surface to the balcony's overlook & inlaying it with the PHS logo could welcome small groups, display large documents & offer generous archival storage below.

In time, just 2 library tables & 8 chairs could accommodate special events, meetings, lectures & school field trips--offering a new venue, enriching the community & bridging Pentwater's past with its present & future.



DUES NOTICE

Dues are on a calendar year basis and 2015 invoices for Annual Members and Sustaining Members were mailed in October. Dues invoices for 2014 Delinquent Members were mailed in October. Delinquent Members that last paid dues in 2013 will be dropped from the Society's Membership List at the first 2015 Executive Board Meeting in January.

DUES ARE DUE

Membership dues for the 2014-2015 year are due. If you see "13", or an earlier year following your name on the mailing label, it is time to renew your membership. The dues amounts are shown on the Membership Application Form on the last page of the newsletter.

Please send your check to:

**Pentwater Historical Society, P.O. Box 54,
Pentwater, MI 49449**

THE HISTORICAL WEST MICHIGAN PIKE EXHIBITION COMING TO PENTWATER



Many people have fond memories of "When we went to the beach or cottage." The towns we passed through, the hot dog stands where we always had lunch, the sites along the way. Now, you can relive those long ago's by seeing the West Michigan Pike Exhibition.

Couple years ago The State Historic Preservation Office, the Beach Towns, Inc., and a consortium of West Michigan convention and business bureaus, joined together and inventoried of all the cultural resources from New Buffalo to Ludington.

The group researched golf courses, resorts, parks, museums, main streets, docks, harbors, hotels, theaters, galleries, restaurants and drive-ins to discover the old and new West Michigan Pike. Beach Towns members focused their effort to create a Michigan Heritage Route, similar to Route 66, that links the region's amazing natural and cultural resources.

In the summer of 2008 Photographer Vincent J. Musi, who photographed "The Mother Road" a portrait of Route 66 for the National Geographic Magazine, spent two weeks in West Michigan taking photos. Now the photos and much more are all gathered together to make an stunning exhibition and presentation about the historic West Michigan Pike.

The Pentwater Historical Museum will host this exhibition June 1 - July 15, 2015 **Don't miss it!**



Windmill Island, Holland, MI

What if we sold our home, rented an apartment or small home closer to where I worked, and bought something in Pentwater now, not when I retired in several years.

And then fate stepped in to nudge our journey. In mid-September I noticed that there was an opening for a Superintendent/Principal at Pentwater School. It seemed like more than a coincidence, especially because I wasn't really looking for a new job. I worked in a charming village near where I grew up. This created quite a dilemma, especially because it was Thursday late afternoon and applications were due on Friday.

We decided to throw our hat in the ring, and the rest is history. We made an offer on Gary Nicholson's house (even though he didn't live there anymore, we learned that it is still referred to as his house). My January 1 start date required that we find a temporary place to live, and that was one of my first indications of just how small Pentwater is. We didn't know anyone in Pentwater, but we learned that didn't mean they didn't know us!



Jerry's Cottage

On my second day at work, Chief Hartrum came to introduce himself. After my first day staying in an apartment above the Village Salon, the Chief said, "so, you are living in Quintus' apartment". It was a little disconcerting that my quiet, private entry to the village was so public, and I learned that is just how it goes in Pentwater. People know a lot about you and you know a lot about them.

We spent the next month packing up the old house on weekends and getting to know new students, staff, and routines during the week. Once we moved, we sent out cards to family and friends with our new contact information. And then fate let us know why it had stepped in to nudge our journey. . .

Mary's article will continue in the next newsletter.

Mary Marshal is Superintendent of the Pentwater Public Schools.

2014-2015 OFFICERS & TRUSTEES OF THE PENTWATER HISTORICAL SOCIETY

Dick Warner President	William O'Donnell V-President	Jim Alfredson Secretary	Mike Castor Treasurer
--------------------------	----------------------------------	----------------------------	--------------------------

MEMBERSHIP CHAIRWOMAN Karen Way	DIRECTOR OF INFORMATION MANAGEMENT Jim Ege	MUSEUM DIRECTOR Ed Bigelow
---------------------------------------	---	----------------------------------

TRUSTEES: Amy LaBarge, Bob Childers and Deb Dewar

NEWSLETTER COMMITTEE

Jim Pikaart	Bill O'Donnell	Bruce Bates
-------------	----------------	-------------

USE THIS FORM TO BECOME A MEMBER OF THE PENTWATER HISTORICAL SOCIETY

NAME _____

ADDRESS (The Address where you have your important mail sent when it absolutely positively has to get there!)

E-MAIL: _____

CITY _____ STATE _____ ZIP _____ PHONE _____

TYPE OF MEMBERSHIP: •Patron \$500* •Life \$250* •Sustaining \$50*
•Annual \$20* •Student \$3 (* Includes Spouse)

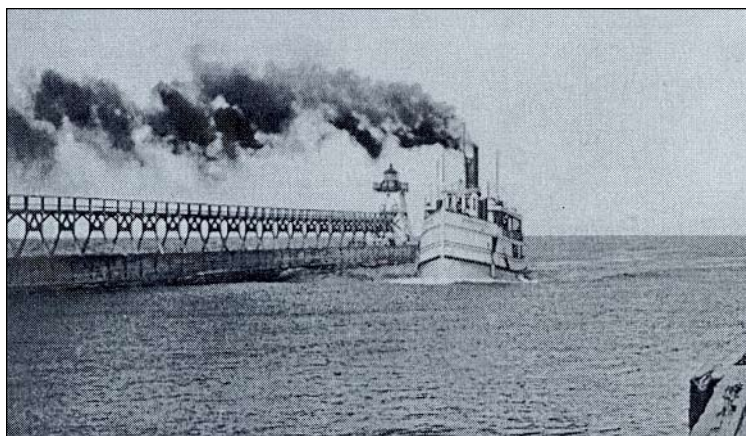
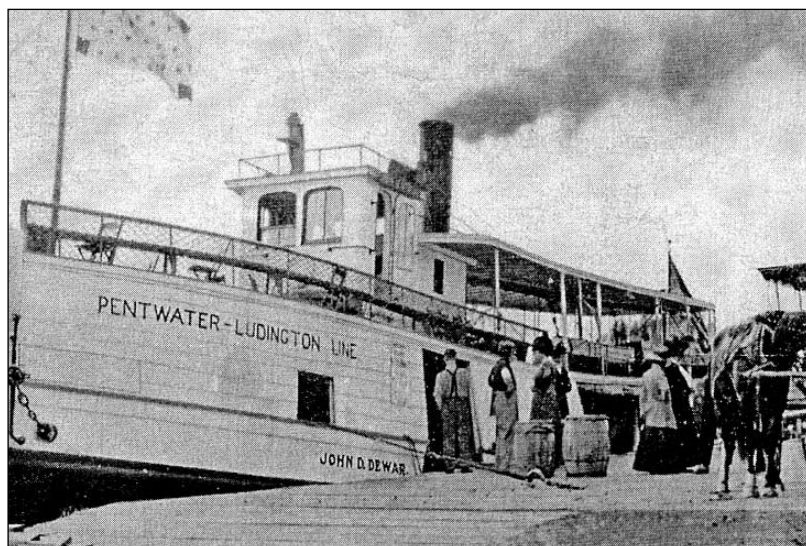
STATUS: ☐ New
☐ Renewal

Would you like to be contacted to participate in society activities? If so, your area of interest is: _____

☐ Yes, Please send the newsletter by e-mail. My e-mail address is: _____

PLEASE MAKE CHECK OR MONEY ORDER TO:
The Pentwater Historical Society, P.O. Box 54, Pentwater, MI 49449

AUTHORIZED
SIGNATURE _____



In days gone by Pentwater harbor was serviced daily by passenger/ freight steamboats. The photos and old postcards show similar but different steam boats in arriving and and docking in Pentwater.



PENTWATER
HISTORICAL
SOCIETY
P. O. BOX 54,
PENTWATER,
MICHIGAN 49449

Happy Holidays
FROM PENTWATER, MICHIGAN